

Medical & Office Suite for LEASE

7440 N. Shadeland Avenue
Indianapolis, IN



PROFESSIONAL MEDICAL & OFFICE SUITE Second Floor

- ❖ Great location & high visibility
- ❖ I-465 & Shadeland Avenue exterior signage potential
- ❖ Quick & easy access to I-69 & I-465
- ❖ Abundant free parking
- ❖ Close to restaurants & banking
- ❖ Annual Average Daily Traffic:
Shadeland Ave - 27,069 vehicles

Danny Maish
Managing Broker

317.439.5800
dmaish@usrexllc.com





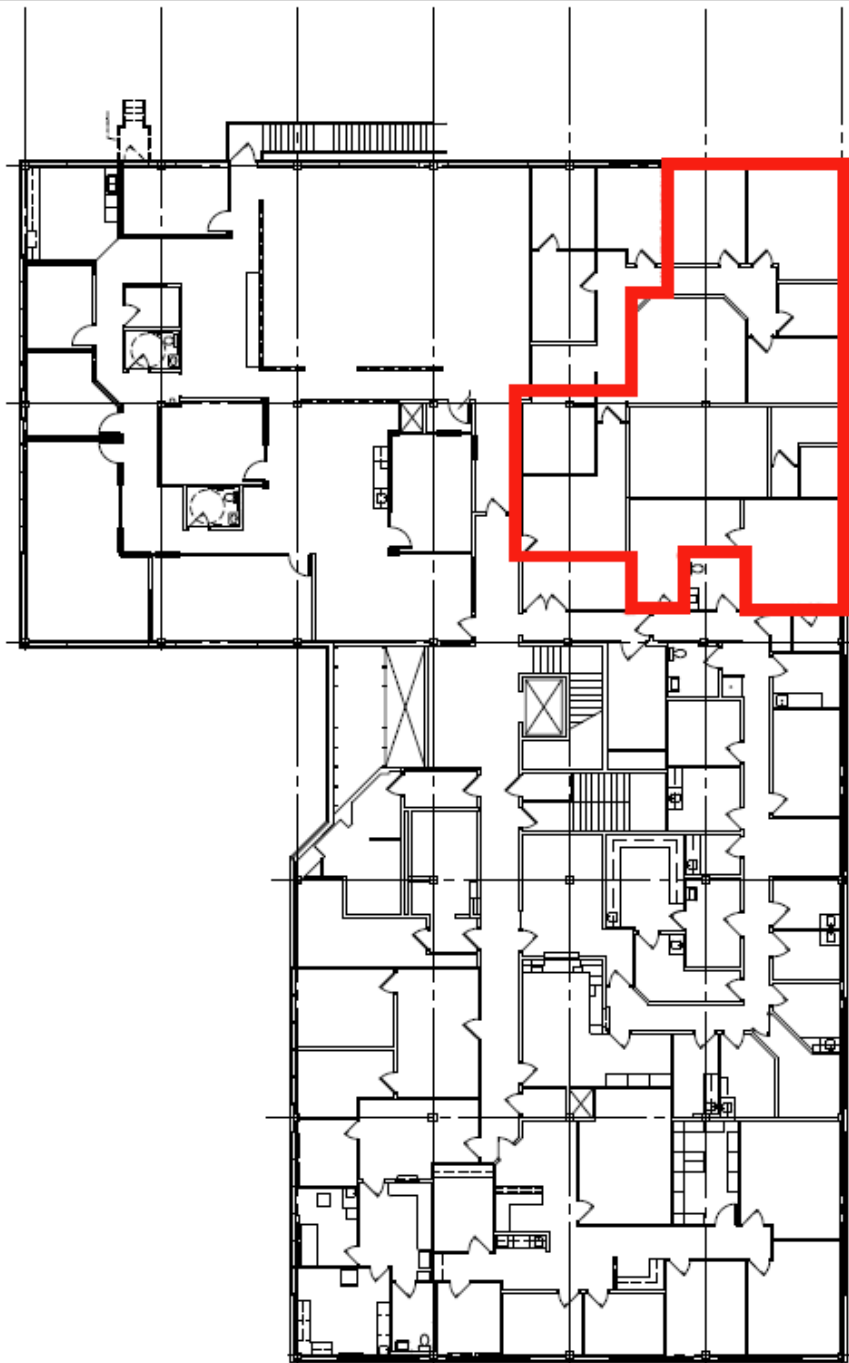
ONLY 1 SUITE LEFT – SUITE 202

- ❖ Approx. 2,300 square feet
- ❖ 5 private offices
- ❖ Conference room
- ❖ Large cubicle area
- ❖ Starting at \$19/SF full service



Medical & Office Suite for LEASE

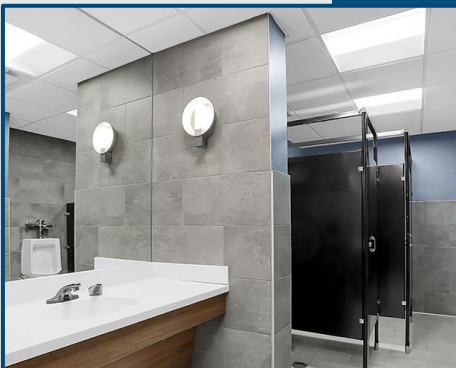
7440 N. Shadeland Avenue
Indianapolis, IN



SECOND FLOOR

Medical & Office Suite for LEASE

7440 N. Shadeland Avenue
Indianapolis, IN



COMMON AREAS

Main Lobby
Conference room
Canteen/break area
Restroom

*A well-maintained
professional office
building*

Medical & Office Suite for LEASE

7440 N. Shadeland Avenue
Indianapolis, IN



Danny Maish

Managing Broker

317.439.5800

dmaish@usrexllc.com

